

Modular Design For Fast Installation.

All three GlassWalk systems utilize IBP's patented aluminum grid, whose standard clear anodized finish offers an attractive view from any angle. Custom colors are also available. Each system is shipped as a kit, with structural members precut to your design specification, and the basic installation process for each is similar.

GlassWalk systems are designed to be set in a containment opening with a support ledge capable of supporting the floor's self-weight and live loads as required by the local governing building code. Here are some basic guidelines:

- **GlassWalk 6" paver systems:** 20 PSF self-weight, 7'6¼" maximum clear span at 100 PSF live load
- **GlassWalk 8" paver systems:** 20 PSF self-weight, 6'3¼" maximum clear span at 100 PSF live load
- **GlassWalk SG systems:** 14.3 PSF typical self-weight—system is designed for 125 PSF live load, and clear span will vary based on design

Installation is easy. Glass pavers are inserted into rubber boots, then set into the grid. With structural glass units, the installer applies precut extruded silicone cushions to the sides of each grid opening before setting the glass in place. (Vacuum cups are recommended for this step.)

Modular design helps speed installation. Once the perimeter members are in place, you can install grid and glass together, one row at a time. When all glass units are installed, apply clear silicone sealant around each paver or SG unit to finish the job.

Easy Maintenance

Made from glass, pavers and SG units require little to no special care. Installation and care instructions, technical specifications, and other bulletins are available from your IBP representative and online at www.ibpglassblock.com

Whether your goal is bringing light to otherwise dark spaces, visually enlarging an area, or simply building in a little extra drama, give your next project a touch of pure genius: GlassWalk floor systems from IBP.

Installing a paver system is a simple, 6-step process: perimeter members, spanners, spacers, rubber boots, and then pavers. Silicone sealant completes the job.



Once perimeter members are set into the containment opening, a GlassWalk SG installation goes smoothly...



from spanner...



to spacers...



to silicone cushions...



to glass units...



Total elapsed time for this stair landing: approximately 2 hours.

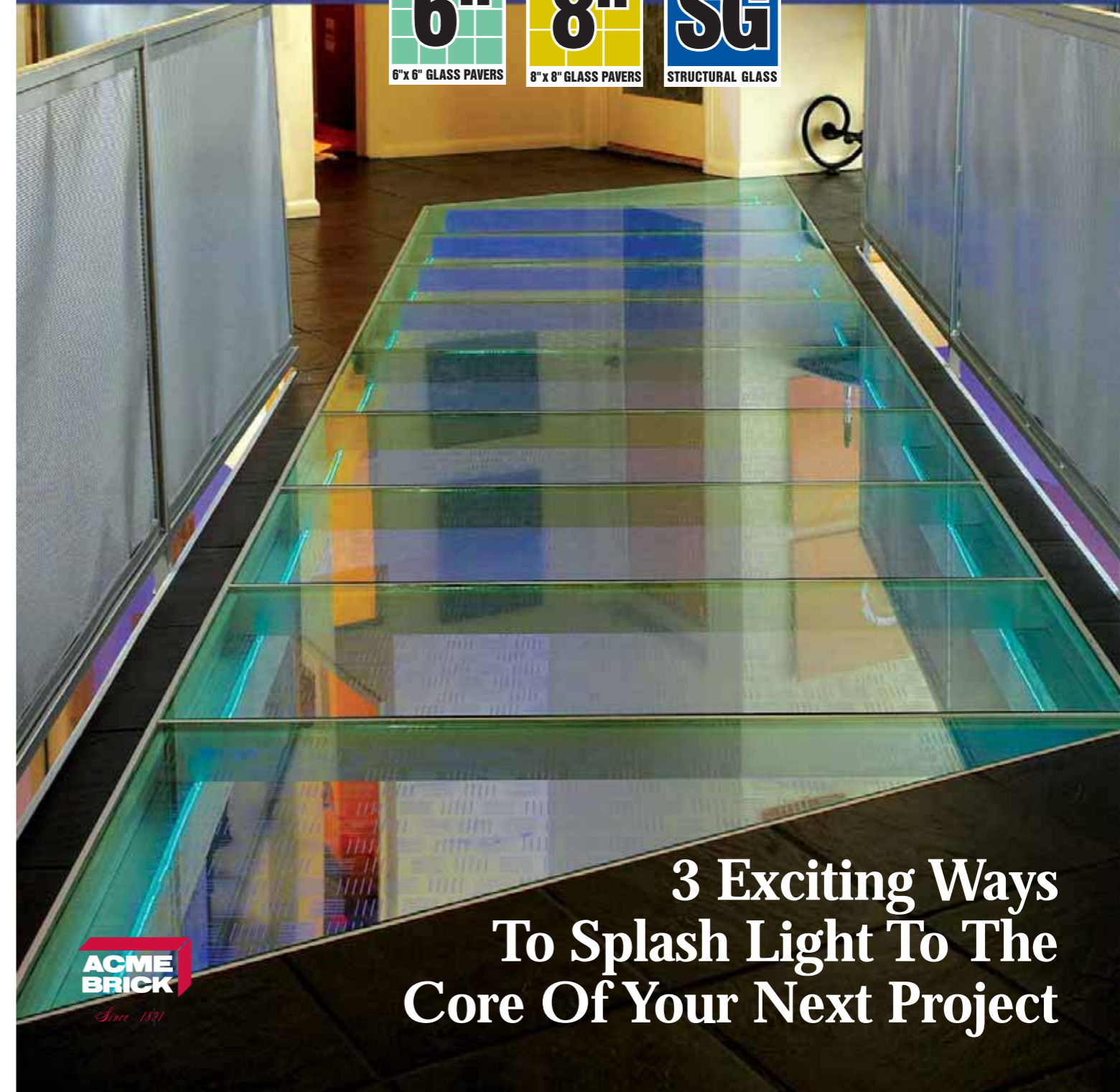
distributed by:



Innovative Building Products, Inc.
an Acme Brick company
2917 West 7th Street
Fort Worth, TX 76107
1-800-932-2263 or (817) 332-9124
Fax: (817) 332-1406
www.ibpglassblock.com

GLASSWALK™

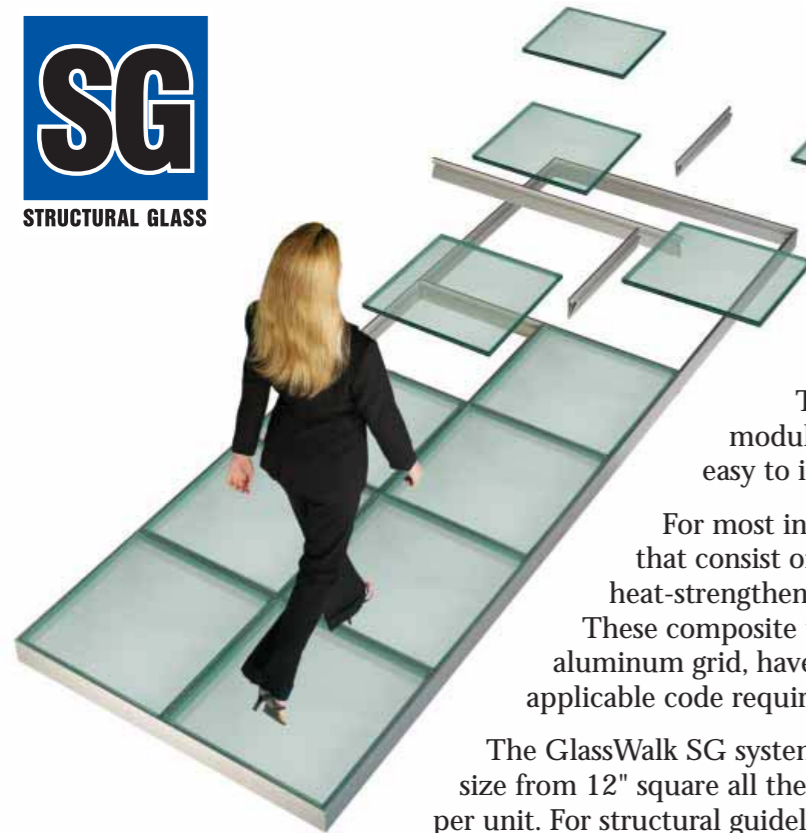
IBP GLASS FLOOR SYSTEMS



3 Exciting Ways To Splash Light To The Core Of Your Next Project



See Floors And Walkways In A Whole New Light, With The IBP GlassWalk™ SG System.



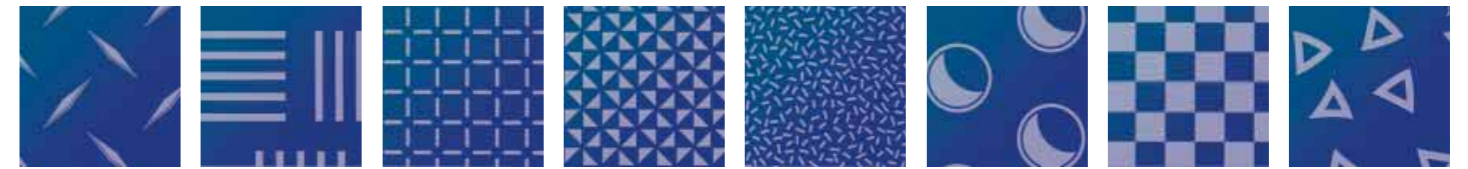
IBP now offers a floor system engineered specifically for the next generation in structural glass: 1" thick laminated units. These new units are ideal for any application that calls for drama—or wherever natural light is at a premium.

Proven Performance And Safety

The heart of every GlassWalk SG floor system is a modular IBP aluminum grid, which is strong, lightweight, easy to install, and proven in hundreds of floor applications.

For most installations, IBP supplies two-ply laminated glass units that consist of a top layer tempered for impact resistance and a heat-strengthened bottom layer, bonded with a clear resin interlayer. These composite units, combined with the performance of the aluminum grid, have been proven in tests by independent labs to meet applicable code requirements for load and impact.

The GlassWalk SG system accommodates individual glass units ranging in size from 12" square all the way to 48" square—for up to 16 square feet in area per unit. For structural guidelines and other important details, please consult the structural glass size chart in the GlassWalk section of www.ibpglassblock.com



Heat-fused ceramic "frits" provide traction. Choose from over 30 standard patterns—or custom-design your own!

Slip resistance is achieved with a patented ceramic-based frit, permanently heat-fused to the walking surface. Frits provide a wet-dry slip coefficient up to 1.1, which far exceeds the most stringent code requirements—and outperforms acid-etching and sandblasting. To achieve translucency rather than transparency, a full etched "obscurity frit" can be applied to the interior of the SG unit.

Built To Your Specification For A Perfect Fit

Like all IBP GlassWalk systems, each structural-glass installation is shipped as a complete kit, with all elements precut to your exact specification—including the glass units themselves. Free detail drawings are available from your authorized IBP representative.



IBP's sleek aluminum grid, with its clear anodized finish, complements any contemporary interior décor.

Floor accents of clear glass, combined with floor-to-ceiling IBP glass block windows, bathe common areas with natural light in this Houston mid-rise.



Or Choose The Classic Appeal Of 6" And 8" Square Glass Pavers.

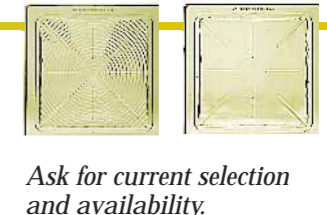
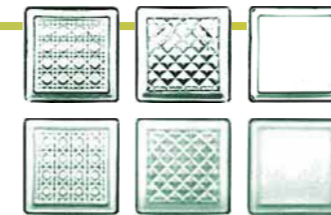


Sandblasted for slip resistance and underlit for effect, glass pavers enliven this residential bath.

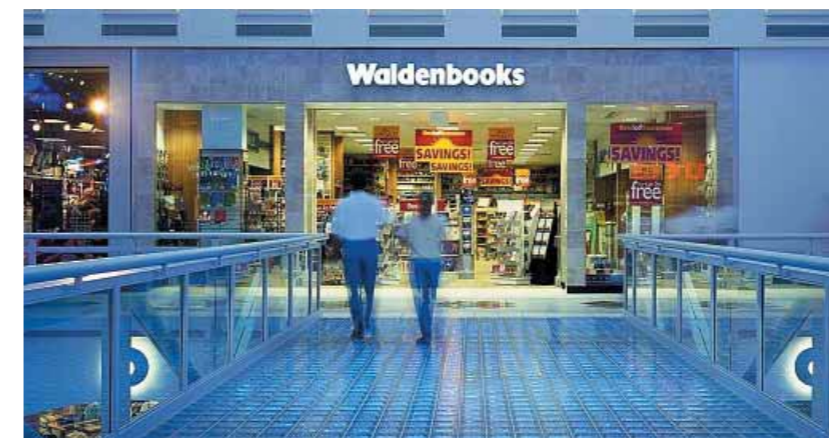
IBP's first GlassWalk system, based on 6" x 6" x 1" glass pavers, caused quite a sensation. Architects and designers created installations that transmitted light and appeared to float in mid-air as if by magic. Simple to install and engineered for high pedestrian traffic, this versatile system has been proven in hundreds of residential and commercial applications. Paver-based GlassWalk systems remain a popular choice for builders, interior designers, and architects who prefer the familiar dimensions of glass block.

IBP has recently extended this line to incorporate a new selection of 8" x 8" x 1" pavers, which offer 78% more area than their 6" x 6" counterparts for significantly greater light transmission.

GlassWalk
Paver
Selection



Ask for current selection and availability.



IBP GlassWalk paver systems stand up to heavy foot traffic, as this Provo, Utah, shopping mall demonstrates.



Pavers can be cut to turn non-square corners, as in this custom-designed floor.