

THE STATE OF THE ART IN THERMAL GLASS WINDOWS



*THE BEST
THERMAL VALUE
OF ANY 2" GLASS
BLOCK WINDOW
ON THE MARKET*

*Engineered by a team of fenestration experts to withstand the most extreme of conditions. Our patented vinyl stack spacing® system outperforms other real glass block windows that have **no** integral spacer and rely only on a thin bead of silicone to assemble and seal between glass blocks.*

**CONTACT
YOUR REGIONAL
FABRICATOR FOR A
CUSTOM OPTIONS
CATALOG*

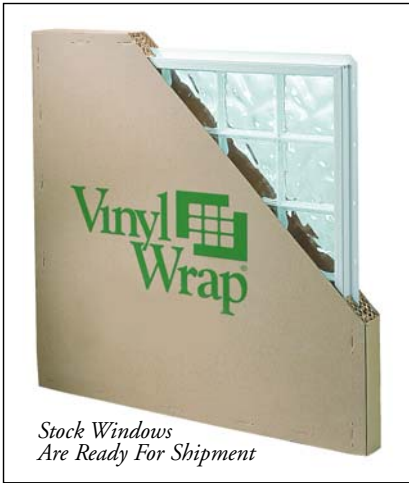
Voted
**Highest
Quality**



by the National Association of
Home Builders Survey and
Builder Magazine

P E R F O R M A N C E

F O R A L I F E T I M E

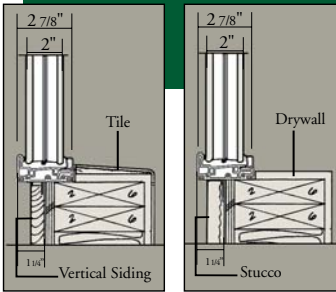


2" System

<i>Thermal R-Value</i>	<i>2.04</i>
<i>Thermal U-Value</i>	<i>.49</i>
<i>Sound Transmission (O.I.T.C)</i>	<i>31</i>
<i>Safety 400lb Impact</i>	<i>passed</i>
<i>Wind Load pounds per square foot</i>	<i>75psf</i>
<i>Weight per square foot</i>	<i>9.8</i>

Available in 8" x 8" x 2" Blocks Only

2" Stock System



Rough Opening Chart

Based on Using 8" x 8" x 2" Glass Block Units

Stock 2" Thick

DISTRIBUTED BY



Custom Color Vinyl Coatings



Block Patterns



Icscapes®

Decora®

<i>Number of Blocks</i>	<i>Rough Opening</i>
<i>1</i>	<i>10"</i>
<i>2</i>	<i>17 3/4"</i>
<i>3</i>	<i>25 3/4"</i>
<i>4</i>	<i>33 1/2"</i>
<i>5</i>	<i>41 1/4"</i>
<i>6</i>	<i>49 1/4"</i>
<i>7</i>	<i>57"</i>
<i>8</i>	<i>65"</i>
<i>9</i>	<i>72 3/4"</i>
<i>10</i>	<i>80 3/4"</i>

*Vinyl Wrap® and Vinyl Stack® Patent and Trademarks owned and developed by Seattle Glass Block 1-800-829-9419
www.seattleglassblock.com*

10 YEAR LIMITED WARRANTY

Vinyl Wrap Glass Block windows are guaranteed and warranted by independent fabricators for a period of 10 years - to be free from defect in materials, workmanship and performance. Limitations and conditions available upon request.



Glass block pattern names are property of Pittsburgh Corning Corporation.